

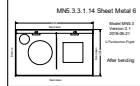
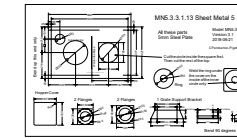
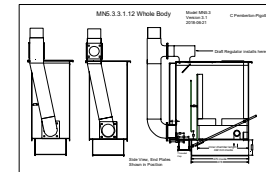
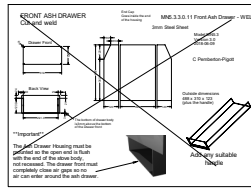
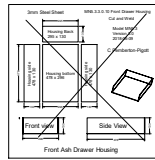
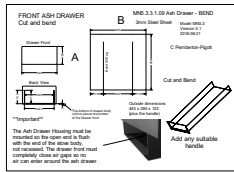
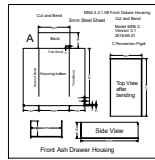
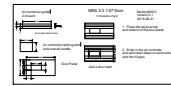
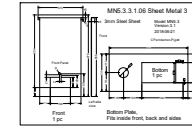
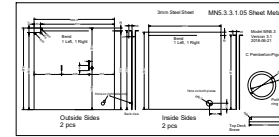
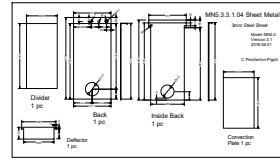
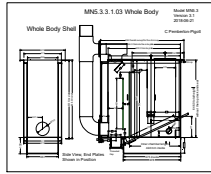
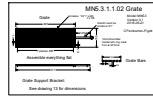
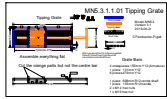
Mongolian 13 kW Low Pressure Boiler Model 5.3

Material: MNS.3.3.1.03 Tipping Grate
MNS.3.3.1.02 Grate
MNS.3.3.1.03 White Body
MNS.3.3.1.04 Sheet Metal 1
MNS.3.3.1.05 Sheet Metal 2
MNS.3.3.1.06 Sheet Metal 3
MNS.3.3.1.07 Sheet Metal 4
MNS.3.3.1.08 Sheet Metal 5
MNS.3.3.1.09 Sheet Metal 6

Vendor: 3.16L 40mm plastic refractory plates 2015-05-21
C. Pamberton-Pigott

Material: MNS.3.3.1.03 Tipping Grate
MNS.3.3.1.02 Grate
MNS.3.3.1.03 White Body
MNS.3.3.1.04 Sheet Metal 1
MNS.3.3.1.05 Sheet Metal 2
MNS.3.3.1.06 Sheet Metal 3
MNS.3.3.1.07 Sheet Metal 4
MNS.3.3.1.08 Sheet Metal 5
MNS.3.3.1.09 Sheet Metal 6

Instructions:
Inside bands are sharp - check band side with screw before bending
Chimney connector is 158 outside dia
Grid plates are placed ON the side and hang down 15mm
The front height is to suit local customer preference, typically 200mm
Plastic refractory plates are treated with fireproof cement or slay
Door hinges: 2x35mm baller hinges welded on the back side
Door latch must be reliable - door must seal all round



Cut and Weld Alternatives to Bent Sheets

